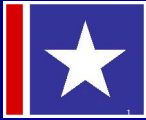


**Law Enforcement
Management Institute
of Texas**

Leadership Command College
Writing Workshop
Module I



1


Goals for Today

- What is a Leadership White Paper (LWP)?
- What are the due dates?
- What are your responsibilities?
- What is a thesis?
- What resources are available?
- What are the Research Day expectations?

2

Expectations

- **To graduate, you will**
- Write Leadership White Paper (M1)
- Present/Defend Leadership White Paper
 - (M1 & M3)
- Create/Display Leadership Portfolio
 - (M2 & M3)



3

Steps to Accomplish Expectations

■ Module I

1. Library Research Day
 - Work with Research Librarians
2. Complete Outline and Complete Draft
 - 10 pages minimum, 10 sources minimum
3. Oral presentation on topic (7 min), thesis statement, points, counterpoints, etc.



4

4

Steps to Accomplish Expectations

■ Module II

1. Complete polished draft if LWP not already submitted
2. Work on your Leadership Portfolio

■ Module III

1. Obtain "Final Approved" LWP prior to attending
2. Display completed Leadership Portfolio
3. Present Oral Defense of Leadership White Paper (15 min)

5

5

What is an LWP?

- Presents a two-sided argument about an issue
- Takes a stand on an issue and then defends that position
- Does not persuade or compare/contrast – but states a position and provides support
- Establishes possible counter arguments and provides research-based support
- Investigates/researches a key issue, interest, or problem identified as an important issue in the field of law enforcement/criminal justice

6

6

Why an LWP?

- Organizes and outlines viewpoint on an issue
- Formally informs others of position
 - Foundation to build resolution to difficult problems
- Allows passion to be demonstrated by the depth/breadth of argument
- Creates consistency in maintaining position in negotiations

7

Why an LWP?

- Identifies a concern to address and explains its importance
- Organizes and outlines viewpoint on the issue
- Formally informs others of position
 - Foundation to build resolution to difficult problems
- Allows passion to be demonstrated by the depth/breadth of argument and the tone
- Creates consistency in maintaining position in negotiations

8

Why require an LWP within the LCC?

- Provides an edge in the law enforcement field
- Helps develop applied research skills
- Enhances written AND oral communication skills
- Provides a format to use in future presentations to command staff, city council, etc.
- Become a published author
- College credit
 - 12 Undergraduate hours
 - 6 Graduate hours

9

THESIS SENTENCE

10

10

Thesis Sentence

- Is a single sentence you could read to tell someone the claim of your paper
- The entire paper will offer a logical defense in support of your claim
 - The thesis tells them what your stance is
- A statement that clearly communicates your view on the subject
- Is a single sentence at the end of your introduction that presents your argument to the reader
 - Rest of paper gathers/organizes evidence that will inform reader of the logic of your interpretation

11

11

Developing a Good Thesis Sentence

- A good thesis sentence will ...
 - Be complete
 - The claim of your paper should be obvious within the statement. No mystery needed
 - Be concise
 - Use only as many words as it takes to communicate your paper's central point – Do not include position points
 - Be clear
 - Use grammatical correctness and precision so the statement is clearly understood and articulated
- Include the word "should"
- It is in statement format - not a question
- It is the foundation of your entire paper

12

12

Thesis Sentence Examples

- Professional musicians that are not knowledgeable of the concepts of music theory will hinder the output of musical ensembles or bands.

Vs.

Professional musicians **should** be knowledgeable of the concepts of music theory.

- Body cameras **should** be worn by LEO's.
- LEAs **should** use social media.

13

13

Thesis Sentence What Not to Do

- Body cameras should be worn by officers **in order to increase the transparency of the law enforcement profession, protect officers against false allegations, and to assist in cases.**
- Do not include the "why" of the thesis inside the thesis statement.

14

14

BREAK

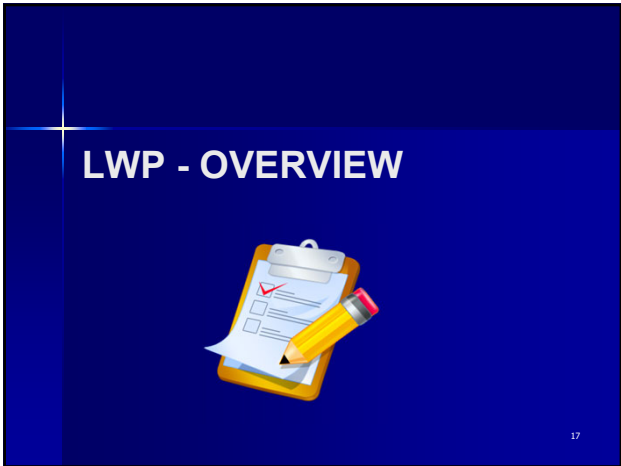


15

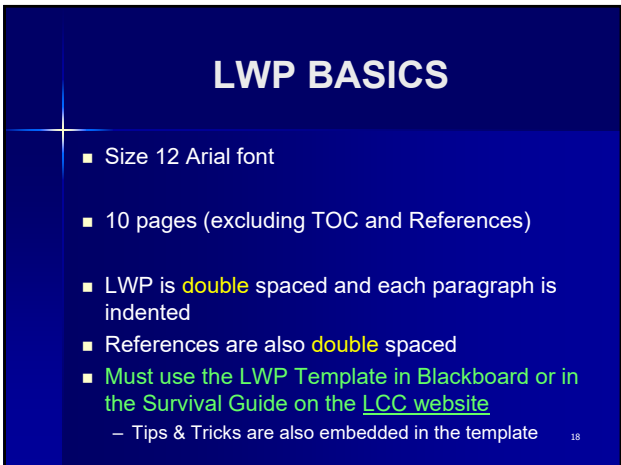
15



16



17




18

LWP SECTIONS

Abstract (written last, 1 pg. max, do not indent, do not include multiple paragraphs)

- Purpose of the paper (describe the problem)
- High-level overview
- Establishes importance of topic
- States thesis



19


LWP SECTIONS

Introduction

- Define, describe, or clarify the topic
- Establish the importance of the issue
 - so what?
- Historical or scholarly context
- Establish the main points
- Present your thesis

20

Introduction



Topic

So what?

Background

Idea organization

Thesis

21

LWP SECTIONS

Position (at least 2) – THE “WHY”

- Assert Point 1
 - Statement
 - Evidence (research/citation)
- Assert Point 2
 - Statement
 - Evidence (research/citation)
- Assert Point 3
 - Statement
 - Evidence (research/citation)

```

    graph TD
      A[Safer drivers] --> C((Keeping red light cameras))
      B[Generates revenue] --> C
      D[Visual recording] --> C
      
```

22

22

LWP SECTIONS

Counter Arguments (at least 2) - “THE WHY NOT”

- Counter arguments are arguments against the THESIS, not the position points
- Research opposing viewpoints and provide evidence of counter arguments with citations
- **Refute** counter arguments with **rebuttals** (at least 2)
- Provide research that shows why the counter arguments are invalid and cite

23

23

LWP SECTIONS

Counter Arguments

- **Assert Counter Argument 1**
 - Statement & Evidence against Thesis (research and citations)
- **Assert Rebuttal 1**
 - Statement & Evidence to refute Counter Argument 1 (research and citations)
- **Assert Counter Argument 2**
 - Statement & Evidence against Thesis (research and citations)
- **Assert Rebuttal 2**
 - Statement & Evidence to refute Counter Argument 2 (research and citations)

24

24

Counter Argument 1 - Creates more accidents

- Rebuttal - Rear end instead of T bone (citation)
- Rebuttal - Fewer injuries and deaths (citation)

Counter Argument 2 - Issue of Privacy

- Rebuttal - Court says no (citation)

25

25

LWP SECTIONS

Recommendation – “THE HOW”

- Reiterates the thesis
- Summarize position points, counter arguments, and rebuttals
- Reiterates importance of the topic to LE and/or society and restates key evidence/research
- Provides a plan of action or policy implications
 - How to implement the thesis

26

26

Key Points

Connect ideas

Reaffirm position

Restate thesis

Benefit to LE and Society

27

27

LWP SECTIONS

References (min of 10) in APA Format

- Use DO's & DON'Ts of Scholarly Writing Guide and the PURDUE OWL 7th ed. APA Style Guide
- Listed in alphabetical order with hanging indentations
- Every listing must be found in the body of the paper in the form of an in-text citation
- All information readers might need to further investigate or cross-reference the research
 - Please ensure all URL links work before submitting LWP²⁸

28

LWP SECTIONS

References (cont.)

- 1) Determine what kind of source
 - Journal Article / Magazine Article
 - Books, Dissertation, Thesis, Prior LCC White Papers
 - Electronic Source (Webpages, Online News)
 - Internal Agency Documents
- 2) Determine the author(s)
 - A person, group of people, or an organization
 - If no person is listed, the organization / group / website is likely the author
 - If no person or organization is available, use the title ²⁹ (rare)

29

LWP SECTIONS

In-Text Citations

IF YOU DIDN'T WRITE IT, CITE IT!

APA Format

Purdue OWL 7th Edition Style Guide is the gold standard

Narrative vs. Parenthetical Citations

- Smith and Jones (2020) argue that law enforcement is a noble profession.
- Law enforcement is a noble profession (Smith & Jones, 2020). ³⁰

30

What is included in the LWP?

- **Appendix A, B, C (optional)**
 - Scenarios
 - Any detailed operational scenarios/plans
 - Examples of policy
 - Graphs, Figures, Tables
- **A descriptive caption must be added to all graphs, figures, images, etc.**

31

31

Artificial Intelligence

- **Do not** use AI to write any portion of the paper for you or copy / paste AI responses
- **Do not** use AI to write your citations or references for you
- AI **can** be used for brainstorming ideas (position points / counter arguments / grammar)
- Use **The DO's & DON'Ts of Scholarly Writing** packet and **The PURDUE OWL 7th ed. APA Style Guide** for citations & references

32

32

Acknowledge AI Use

- **Acknowledgement of AI Use form on the last page of the LWP Template, after the Appendix**
- Check the box that best describes your use of AI
 - If AI was used:
 - Briefly describe which AI tool was used and for what purpose (brainstorming positions/counter arguments, editing grammar, etc.)

33

33

What is not included in LWP

- Rhetorical Questions
- Lists / Bulleted Points
- Charts
- Graphs
- 1st or 2nd person (I, me, we, our, you, yours, etc....)



34

34



HOW DO I FIND TOPICS OF INTEREST?

35

35

How do I get started?

- **Topic**
 - Law Enforcement
 - Criminal Justice
- **Challenge**
 - Use this as a leadership opportunity to leave a legacy to future officers



36

36

Issue Criteria

- **Establish arguability of a topic**
 - Is it a real issue, with genuine controversy and uncertainty?
 - Can you distinctly identify two positions?
 - Are you personally interested in advocating one of these positions?
 - Is the issue narrow enough to be manageable?
 - Is there enough research/evidence to support your position?

37

37

Where do I find topics covered by former LEMIT students?

www.lemitonline.org

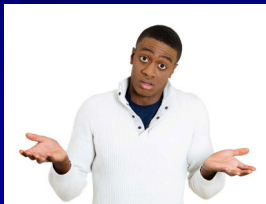
- Click on Resources
- Under Publications is a blue hyperlink to the Newton Gresham Library
- Once you've clicked through, enter in your search topic

38

38



LWP QUESTIONS??



39

39

BREAK



40

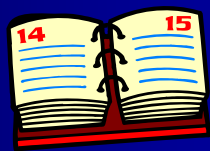
40

10:00

41

41

DUE DATES



42

42

Module I

LWP Timeline and Due Dates


- LWP Outline (Topic & Introduction Section Only) due to lccresearch@shsu.edu by **noon tomorrow**
 - Do not wait until Library Research Day to select your topic
 - This gives Susan time to assess your topic & help you locate resources
- Complete Draft and Complete Outline due **3rd Wednesday by midnight (May 20th)**
 - 10 pages in length and includes 10 sources
 - Submit LWP Rough Draft & Outline in **Blackboard**
- Power Point presentations (7 minutes) will be given on **3rd Thursday**

43

Module II

LWP Timeline and Due Dates

- It is best practice to have the LWP submitted for Final Approval before attending Module II so that you can focus on the Leadership Portfolio
- If unable to submit prior to Mod II, the polished draft of LWP should be submitted to lccresearch@shsu.edu by
3rd Thursday of Module II



44

Module III

LWP Timeline and Due Dates

- Final Approved LWP is complete before confirmed attendance to Module III
- Draft Leadership Portfolio Due - **1st Wednesday**
- Final Leadership Portfolio Due - **3rd Monday**
- Oral Defense
 - 15 minute presentation - **3rd Thursday**
 - Panel of LCC faculty and LCC graduates

45

Leadership Portfolio Overview

46

46

What is a Leadership Portfolio?

A thoughtful, organized, and continuous collection of a variety of authentic products (artifacts) that document a professional's progress, goals, efforts, attitudes, practices, achievements, talents, interests and development over time.

- Winsor & Ellefson (1995)

47

47

Reason to Create a Leadership Portfolio

Creating a leadership portfolio is a culminating experience in the leadership development process assisting administrators in the areas of performance appraisal, professional growth, and career planning.

- Meadows & Dyll (1999)

48

48


Leadership Portfolio Components - Required

1. Personal Leadership Statement	9. Leadership Autobiography
2. Leadership Assessment Compilation	10. Leadership White Paper (LWP)
3. Resume	11. Professional Social Network
4. Curriculum Vitae	12. Module I
5. Educational Credentials	13. Module II
6. Awards/Honors	14. Module III
7. Organizations	15. Module IV
8. Career Development Goals	16. Optional (any additional applicable components)

49

49

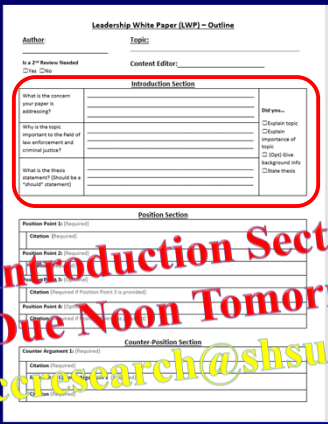
Exercise



- Break up into groups
- Use your LWP Outline to guide your group through the brainstorming exercise
 - Complete Thesis Statement (last of Intro section)
- Report back to the classroom in **45 minutes**
- Read Thesis Statement aloud to group

50

50



Leadership White Paper (LWP) – Outline

Author: _____ Topic: _____

Is a 2nd Review Needed? Yes No Content Editor: _____

Introduction Section

What is the context your paper is addressing? _____

Why is this topic important to the field of law enforcement and criminal justice? _____

What is the thesis statement (should be a "strong statement")? _____

Ref you... citation topic citation importance of topic (2nd) give background info close thesis

Position Section

Position Point 1: _____

Citation: _____

Position Point 2: _____

Citation: _____

Counter Position Section

Counter Argument 1: _____

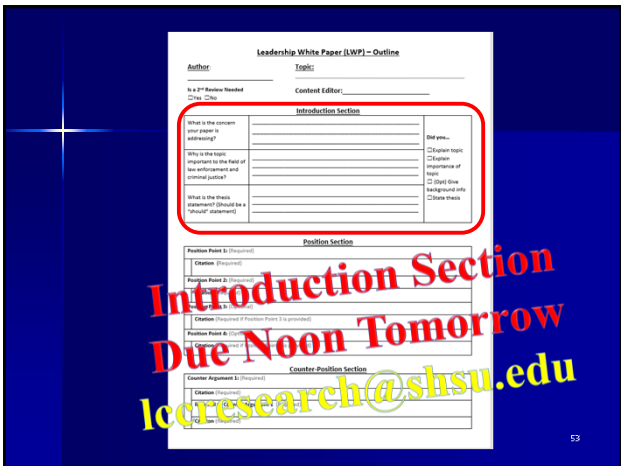
Citation: _____

51

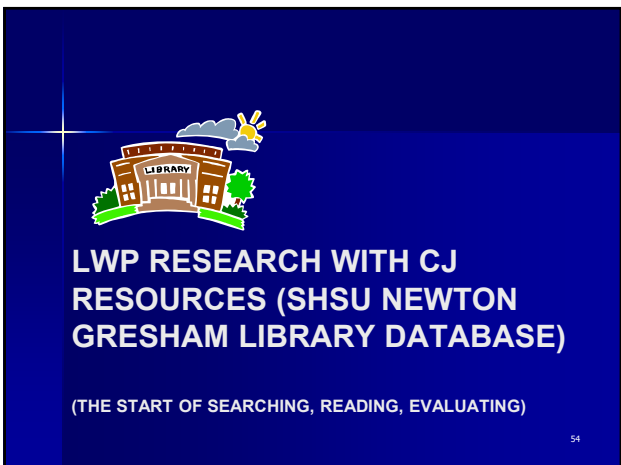
51



52



53



54

Library Day Details

- Thursday, May 7th (meet in LEMIT Pope Room on the First Floor)
- 9:00am – Noon (allow an hour for travel)
 - LWP Research w/Criminal Justice resources
 - Susan Strickland
- Noon
 - Lunch provided
- 1:00 – 3:00pm
 - LWP Research w/Criminal Justice resources
 - Susan Strickland

55

55

Library Day Details

- Bring with you:
 - Jump Drive (laptops not needed)
 - LWP outline (paper or e-copy)
 - SHSU Username & Password to login to computers (write it down)
- 10 cars max for parking
 - carpool
 - reimbursement for personal vehicles only
 - give vehicle info to TAMU staff (plate, make, model & color)

56

56

Library Day Details

- Must show Susan @ least 10 sources before leaving!
- Get with Ian for help with formatting your 10 references.
- Wear your name tag.
- If carrying, make sure your badge is visible.

57

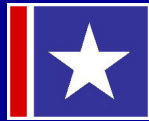
57

1600 Bobby K Marks Drive, Huntsville, TX



58

Questions?



59
